

# SENTINEL

## Foothill College

Volume 21, Number 3

Los Altos Hills, CA 94022

Oct. 13, 1978



Students in a Foothill College "Natural History" class got a first hand look at a pint-sized version of the nearly extinct California mountain lion this week when Foothill student Wally Kauffman brought in his six-week old pet Chu-Chu!

Instructor Glenn Moffat noted that mountain lions once were commonly found in the coastal hills here and throughout the state, but have since been hunted to near extinction.

## Grading policy revised

Foothill's grading policy has "lightened up for the class droppers and tightened up for the class flunkers," according to Irel D. Lowe, the school's Associate Dean of Students.

The new grading policy, which was mainly initiated by Lowe, went into effect over the summer.

"The main change from previous years' policy is the extension of the drop date (the time which you can drop classes without it appearing on your record) from two weeks after classes start to four weeks after classes start," said Lowe.

"California law states that some grade must be issued if a class is dropped after the drop date. The old two-week drop date caused a lot of complications with students, especially those in tutorial programs, who

simply didn't need any more help after the first three weeks or so and received NC's for not completing their courses," said Lowe.

"The NC meant nothing at all then," continued Lowe. "It just looked bad to students; it was not averaged into the GPA at all. Now it's different, an NC will mean the same as an F used to, and instead, a W (meaning "Withdrawal") will be issued to students who drop after the drop date, but only if they have a D or better in the class."

"If the student is flunking his class at this time, he will receive an NC which means the same as an F. This will count against him on his GPA," said Lowe.

"Other than these changes, Foothill's grading policy is basically the same as in previous years."

For further information on the new grading policy, the Ad-

ministration suggests you see your counselor or call the Student Development Center at 948-8590 Ex. 237.

## Anti-Prop. 6 concert set

A concert to benefit organizations opposing Proposition 6, the ballot Initiative which could lead to the firing of school employees accused of homosexuality, is planned for Friday, Oct. 13, at 8 p.m. in the Appreciation Hall at Foothill College.

The concert will feature the music groups "Natural Delight" and "Women's Song" and will be sponsored by the Foothill Women's Center and Mid-Peninsula Women Against Six.

A \$3 donation will be requested at the door. Child care will be provided on the Campus.

## ASFC sponsors political week

By MICHAEL LEMKE

In an effort to provide information to Foothill students regarding the upcoming election, Foothill's student government will sponsor a political week October 16-20.

Tables will be set up outside the Campus Center for political groups and campaigns who wish to hand out information and talk with students about the November 6 election.

"Every political group is welcome," said ASFC President Neil McKenzie, "But they should notify someone in student government so a booth can be set up for them."

"All groups are welcome; we've invited third parties as well as the two main parties," said McKenzie.

State Senator, Democrat Arlene Gregorio from the state's 10th district will speak on Tuesday October 17 from 1-2 p.m. in the Campus Center Fireplace Lounge.

Gregorio's opposition, Republican Marz Garcia, will also speak at this time.

Republican Greg Morris, challenger to 12th Assembly District Representative Vic Calvo, will speak October 19, 1-2 p.m. in the Fireplace Lounge.

Calvo will also be at Foothill on October 17 to pass out information and talk with students.

"Voter registration week at Foothill, held September 25-29, went very well," said McKenzie. "The League of Women Voters was very pleased with the response."

"The Ben Vereen concert planned for this quarter has been cancelled, although student government is still negotiating with Vereen for a show in February," said McKenzie. "There are still possibilities for Neil Sedaka, Emy Lou Harris and Flip Wilson

to give shows this quarter, although plans are still in the negotiating stage and may not be final until winter quarter."

"Negotiations are under way for a top jazz artist, a rock band and a student government sponsored dance for this quarter. Although there are no big name bands, they are all excellent groups," said McKenzie.

"Because of the low number of concerts planned this quarter, student government may double the number of concerts next quarter."

"Radio station KFJC must select a new station manager who must be approved by the ASFC Mass Communications Board," McKenzie said. "I've heard they're going to change operating procedures. Right now I am a bit dissatisfied, but need a lot more information. Last year ASFC granted KFJC a \$6,500 loan, one reason why the student government is going to keep a close watch on the selection of a new station manager."

"Student government has set up a \$2,000 book loan for Foothill students. Needy students who can't afford books otherwise should contact the Multi-Cultural Center," said McKenzie.

The ASFC student film series started off dismally with 87 students attending the September 29 showing of "Nasty Habits" and "Silver Streak."

"Four hundred students were needed for us to break even. It might have been our fault for poor publicity, so we'll try one more movie series and if there isn't enough student interest shown, we'll cancel the program," said McKenzie.

"Student government holds weekly meetings on Thursdays from 2-4 p.m. in C-31 and all students are welcome," concluded McKenzie.

### POLITICAL ISSUES WEEK

Monday, Oct. 16, 1 p.m.: "No on 6" speakers from San Jose State University campus coalition against Briggs initiative and sponsored by California Professors Union.

Tuesday, Oct. 17, 12 noon: Socialist Labor Party Candidate for Lt. Governor  
1 p.m.: State Sen. Arlen Gregorio, Democratic candidate for State Senate, 10th District.

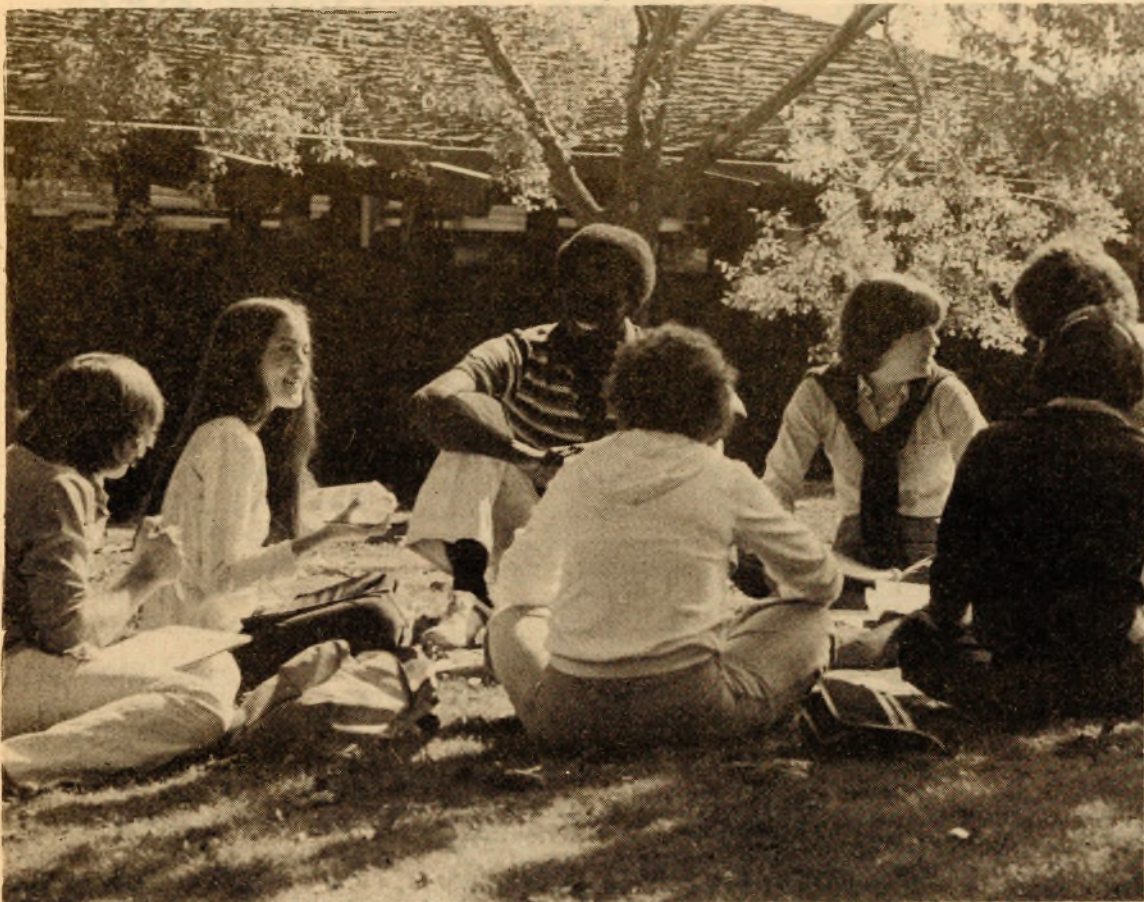
9 a.m. - 2 p.m.: State Assemblyman Victor Calvo, Democratic candidate for State Assembly, 21st District - at information table.

Wednesday, Oct. 18, 1 p.m. - Marz Garcia, Republican candidate for State Senate, 10th District.

Thursday, Oct. 19, 1 p.m. - Greg Morris, Republican candidate for State Assembly, 21st District.

All speakers at Campus Center - Fireside Lounge area.





By Ivan Villa

Students and instructors enjoy education "on the green" soon to end as fall turns to winter

## New De Anza class fee rapped by student rep

The new \$1 per class instructional materials fee, charged at De Anza, was criticized by De Anza Student President Gwen Davis at the Oct. 2 meeting of the Foothill-De Anza Community College District Board of Trustees.

According to Davis the fee policy was not brought before the District Task Force, the Board of Trustees or the De Anza Student Government before its implementation.

An information sheet from Instructional Services at De Anza states that it was felt

this method of paying for materials would be more efficient and economical for students than if materials were sold at the Bookstore or in classrooms.

This sheet also states that students may apply for a refund if "the total number of materials provided in all the student's classes does not equal the total charge paid (at rate of 10 cents per printed sheet or impression)." According to Davis' statement this information was not made available to the general student body.

Davis also questioned the fact that although Foothill students also receive instructional materials, they do not pay a fee.

Student representative to the Board of Trustees Shirley Shepard said, "When De Anza students first told me about this fee I thought it was a mistake. I didn't think the college could charge this fee without bringing it before the board."

President of De Anza Robert DeHart will report to the board on this matter at the next board meeting, Oct. 16.

## Betty Nevin named new head librarian

Although Foothill's Semans Library has taken some severe financial blows this year with a near 50 percent budget cut, it certainly won't be lacking in the energy department with its new Head Librarian, Betty Nevin.

In addition to managing Semans Library on a pinch-penny budget, Nevin is also a catalog librarian, part-time Stanford student, book collector, active member of art organizations, and pursuer of antiques and crafts fairs. She also may be teaching a class in Library Tech next quarter.

"Foothill is a beautiful place to be," says Nevin. "I really don't think I'd rather be anyplace else; I love working with this age group. I also think Semans Library is one of the

best, if not the best library in the area. People from all over seem to come to this library to find what they need; I recall a Stanford student who came here to study for his Master's telling me he didn't think he would have made it without the help this library gave him. He said this library provided more of what he wanted than Stanford's."

Nevin received her Master's Degree in Library Sciences from Simmons College in Boston. She then went on to receive two other Master's Degrees, one in History from Santa Clara University, and one in General Studies from University of San Francisco.

Nevin came to Foothill in fall of 1966 as a Reference Librarian, leaving her position



Betty Nevin

in the Marketing Division of GE's atomic energy facilities in San Jose where, at that time, she was the first and only woman in her department. Her first major accomplishment at Foothill was changing the library's cataloging system over from the Dewey System to the Library of Congress System.

The new Head Librarian would like everyone to know that there is a "Suggestion Box" on top of the catalog files in the library; if you have any ideas or suggestions that might help make ours a better library, drop 'em in the box.

## News briefs

### Law Forum plans debates

The Law Forum, Foothill's longest surviving student club, will be meeting on Tuesday's at 1:00, in room S26.

Law Forum is open to any Foothill student with special benefits to any Pre-law, Political Science, or Social Science majors. Law Forum's primary interest

are group discussions and debates. Past activities have included debates on prostitution legalization, and a case with a massage parlor vs. Palo Alto City Council.

A panel discussion and debate on current propositions is planned for the near future.

### Backpackers push pastries

The Backpacking Club, whose membership is open to anyone interested in nature, backpacking, and climbing, will meet Wednesdays at 1:00, in room P-31.

This year's club chairperson, Don Kenyon, is planning demonstrations on climbing and roping

techniques, North Face, and First Aid this quarter

Most of this year's activities will take place in Yosemite, Sierra Mountains, and Trinity.

The Backpacking Clubs first fund-raiser, a bake sale, will be held on Wednesday, October 18. Proceeds will go toward new backpacking equipment.

### Anti-Briggs concert set

Two groups, "Women's Song and Natural Delight" will be performed in a concert at 8 p.m. October 13 in Foothill's Appreciation Hall.

Tickets will be \$3 donation. All proceeds will be used to support the campaign against Prop. 6, the Briggs Initiative.

### University Day planned

Students are invited to talk first hand with representatives of more than 35 institutions at Foothill College's 5th College and University Day on Monday, Oct. 23, 9 a.m.-2 p.m., at the Campus Center.

On hand will be representatives of virtually all the California State schools, the Uni-

versity of California at Berkeley, Davis, Irvine, San Diego, Santa Cruz, and San Francisco, and many private institutions throughout the country.

Catalogs and other publications detailing each college's entrance requirements, facilities, programs, and "personality" will be available.

### Dental students first in U.S.

Scores released by the American Dental Assn's Council on National Board Examinations for Dental Hygiene show that the recent Foothill College graduating class in that field compiled a class average which ranked the students first in the nation.

According to Dr. Kenneth Horowitz, executive head of the Foothill dental programs, the

Foothill students were among more than 4,600 from 178 community colleges, state colleges, and university programs throughout the country.

At Foothill, students study full-time for two years in preparation for directly assisting dentists with their patients. Twenty-two students are admitted to the program each year.

#### JUDY'S MOPPITS CONVENIENCE HOUSECLEANING

"Done Quickly with Quality"

Help Wanted, Part-time, work on teams

House Cleaning. Start \$3.50 hr.

Must have own transportation.



CALL  
(415) 327-4667







Alvin Toffler Photo by Mark Johnson

# Alvin Toffler predicts "new wave" of future

By SALLY ANDERSON

A new constitution and a new form of government, if any, must be invented to fit society's needs in what Alvin Toffler, author of "Future Shock," calls "the third wave." Speaking Friday, Oct. 6, to a responsive audience of nearly 2,000, Toffler predicted a breakdown of the political system shared by all the industrial nations, regardless of present communist or capitalist definitions.

Toffler described three fundamental patterns of civilization. "During an agriculturally based 'first wave,' the family unit worked as a unit to support itself but in the present industrial, 'second wave,' families can no longer survive economically by working as a unit. Factories, offices, schools, hospitals and prisons accommodated family members in what has been called 'the great incarceration.'"

"This second wave, based on fossil fuels and a mass society, is in a terminal crisis; that a 'third wave' will be technological but not industrial. The ERA extension passed today is part of this revolution," Toffler said.

"Standardization; of money, logic, causation, time characterizes the second wave," said Toffler. "In 1790 watches were mass produced for the first time in response to society's need for synchronization; 'Big is beautiful' is an industrial, not an American ideal. The Soviet Union is building a 23 square mile trucking complex."

Toffler named speed as a causative factor in the second wave's breakdown. "With to-

day's frequency of crises and rapid diffusion of information we are distracted from yesterday's crisis before we can learn from it."

Toffler reminded the audience that at one time presidential inaugurations were held in March, not January. "Now because events move so fast we don't want to risk having a lame duck president for so long after election," he said.

Laughter greeted Toffler's statement that President Carter is a "Twiggy" of politics. "This is not a political criticism," said Toffler, "but a comment on the speed with which 'Jimmy Who?' achieved recognition."

Another factor in the breakdown is the new diversity of society, said Toffler. "The melting pot is no longer our dream. FDR had six groups to woo for support; we have 6,000, each asserting its right to be different. And even these groups are temporary alliances."

He cited a woman who responded to "What are you?" by saying, "I'm a woman," the, "But I'm a feminist," and "I'm a radical feminist," "A lesbian radical feminist," and finally, "I'm a Jewish lesbian radical feminist woman."

Toffler said that with such splintering of interests a consensus is impossible. "The system grows out of synch with the needs of the people so they, and their officials, feel powerless."

Frequent applause interrupted his remarks concerning Prop.

13. "The people don't want to pay high taxes but that's only part of the reason for their vote.

They sense a mismatch between taxes and services so the question is not only, 'How much?' but, 'What for?' We began a revolution with the slogan 'No taxation without representation.' I suggest as our slogan now, 'No allocation without participation.'"

Toffler summarized, "The political structure we have is not a divine document, it was written by intelligent, sophisticated men who lived at a particular moment in history. If we don't begin long range planning now to accommodate the speed and diversity of today's society I fear we will write our new constitution in the heat of political violence."

Audience questions touched on a variety of subjects: from the need to colonize outer space in case of eco-catastrophe (wiping ourselves out), to the significance of data from the shroud of Turin, a cloth said to have been Christ's burial wrap.

Answering a question on hyper-inflation, Toffler said, "Economists thought they had a handle on the system but it isn't the same system any more. It turned out to be an economic Magnot Line, with destruction coming from an unexpected direction."

After the program was officially concluded Toffler remained to answer questions from a group of audience members until the Flint Center staff begged them to "wrap it up" so the building could be closed.

Toffler's new book "The Third Wave" will come out in 1980.

## Plemmins retires, staff saddened

By Mark Johnson

Mary Plemmins, secretary to two of Foothill's presidents, has retired after 19 years of service to the Foothill-De Anza College District.

In 1959 Plemmins began working at the old Foothill campus in Mountain View, which is now a vacant lot. She was secretary for Dr. Nathan Boortz, Director of Technical and Vocational Education and also Director of the Evening College.

"It was nice at that smaller campus," reflected Plemmins. "Everyone knew each other, and we lost that family feeling when we went to the two larger campuses. But I really enjoyed watching Foothill grow in prestige from such a small campus to the big, fine college that it is now."

Plemmins became President Semans' secretary in 1967, in the midst of student unrest and demonstrations over the Vietnam War and U.S. involvement in Cambodia. "This was a dif-

ficult period for everyone," she recalled, "but at least there wasn't any rock throwing or vandalism here like at other colleges."

After President Semans' retirement, Plemmins became secretary for President Fitzgerald. "I really enjoyed working for President Fitzgerald" she remarked. "His door was always open, he enjoyed conversations with students, and always had an open ear for anyone's problems."

Plemmins made a lot of friends during the time she worked at Foothill. Co-worker Barbara Klapp said, "Mary's the greatest and we already just miss her a lot."

Another secretary, Mildred Arnold was near tongue-tied when asked for comment on her friend's leaving. "She's just a great person. What more can I say?" said Arnold. "A real, true lady."

## Blood mobile visits campus

The Red Cross Bloodmobile will be on campus this Halloween from 10:00 a.m. to 2:00 p.m. to take your blood. Foothill's goal this year is to collect 70 pints.

The college will receive credit for the amount of pints they collect, and in the future, if a Foothill student should need this blood it will be available to him free of charge.

If you're in good health, come to the Fireplace Lounge on October 31 and donate a pint

of blood...It may save the life of a fellow student or maybe even your own.

## Rec for disabled

A recreation night for physically and emotionally disabled adults will be held every Thursday, 7-10 p.m., at the Foothill College Community House, 551 Lytton Ave., Palo Alto. Activities include movies, music, popcorn, coffee and conversation. Admission is free.

## Retirement Seminar offered

A Retirement Planning Seminar focusing on health, housing, use of time, and financial security will be held Friday evening and Saturday, Oct. 20 and 21, at the Foothill Campus Center, Room C-31.

Ann Brinkerhoff, president of Creative Horizons Pre-Retirement Consultants, will lead the group discussions on retirement planning.

On Friday evening, from 8-10 p.m., a general discussion of "The Challenge of Retirement" is planned. On Saturday morning from 9 a.m.-noon, health and safety, housing, estate planning,

and legal affairs will be covered. Following a lunch break, attitude and role adjustments, use of time, and financial planning will be discussed.

Ms. Brinkerhoff holds a bachelor's degree from Pennsylvania State University and master's degree in counseling from Webster College in St. Louis.

A \$40 fee, payable in advance through the Foothill Box Office,

will be charged. All registrants will receive a free Retirement Planning Seminar Manual to keep. Spouses of registrants are invited to attend the seminar free.

"Retirement Planning" is one of dozens of self-supporting Community Service Short Courses offered through Foothill College.

**WOOD CRAFTERS WANTED!!**

....Display and sell your craftwork in local store. Call 941-1009 or visit "Wood You Believe" in the Old Mill Specialty Center, San Antonio Rd & California St. Mtn. View

**Hobes COOKS!**

2312 CENTRAL EXP. Mtn. VIEW

991 W. EL CAMINO SUNNYVALE

OMELETS  
HAMBURGERS  
ENERGY BLENDS



# Nosing around



By DEWEY DELLINGER

Ah, the last rose of summer. Still enough sun in the sky to keep warm winds blowing across exposed skin, wanting one last tanning experience. Yes, let's hear it for flesh! Everybody loves it, talks about it, gets embarrassed over it, but rarely, oh too rarely, does flesh touch flesh. Which brings us to today's column, "Love and the Community College."

Now, there is plenty of talk around about how hard it is to really meet anybody anymore, in this age of meatpacking house disco bars. Wait, all you people out there who like to go to bars and "meet" people, stay right where you are. Fine, you've found "it." Leave the untapped fertile soil to those without.

A lot of communication-starved people have a hard time starting a conversation, much less going on from there so they sit across from each other in classrooms all quarter long and never quite get together. Damn sad, two lonely romantics passing in the night. (So, tough! You're there to get an education anyway!)

But, there are prime opportunities outside the four-walled institution: the undeveloped and oft' overlooked "activities!"

Life can't be all work and no fun, much less no romantic flings now and again. Why, there's even the possibility of a "meaningful relationship."

Activities! Just think of it: you, having fun. Who knows what that can lead to! Just an add card away, maybe a couple of bucks, and your participation. There's jogging, swimming, horseback riding, movies, tennis, clubs, ASFC, organizations, tutoring (watch out for tutors!), etc. No age barriers, no cover, no minimum. Just get in there and press flesh!

Think of the opportunities! Example: While jogging around the par-course on campus, you run into a group of lonely body development freaks. You're all exhausted from pro exercises, bending over out of breath praying you won't vomit. Suddenly people are talking, carrying on conversations! You could be on your first date in who-knows-how-long before you've even had a shower.

Think about it. Activities could be one of those things you never thought you could do, but were happy when you finally did. All it takes is a step and a word. Fate will take it from there.

Pick you up at eight!

The SENTINEL is a student newspaper published weekly on Fridays during the academic school year by Foothill College, 12345 El Monte Road, Los Altos Hills, CA 94022.

Staff members are students enrolled in the journalism program at Foothill. The SENTINEL office is located in M-24; telephone: 948-8590, x372.

Opinions expressed in columns other than "Editorial" are not necessarily those of the SENTINEL Editorial Board or the De Anza-Foothill College District.

Editor-in-Chief ..... Lynette Kelly  
Sports Editor ..... Michael Lemke  
Arts Editor ..... Sally Anderson  
Photo Editor ..... Dewey Dellinger  
Cartoonist ..... Kevin Jones  
Adviser ..... Herman Scheiding

## Letters

Letter to the Editor:

I wish to make a clarification about the article that appeared in the first Sentinel, about parking fees. The way the article read it sounded as if I was the only one that deserved credit for delaying parking fees.

I did talk to several Board of Trustees and spoke out against parking fees in several committees, but that is just the tip of the iceberg. Shirley Shepard (student representative to the Board of Trustees) has been fighting fees for students.

But there is one man, who has been fighting off parking fees before I was even in high school. Chief Joseph Silva deserves the lions share of the students gratitude for saving them money.

Chief Silva is one of the best allies and friend that students and A'S'F'C' ever had. He has also been very cooperative in other matters such as advising A.S.F.C. and it's members on the planning of most major events on campus. Assuring that when a student or a member of the community comes to a student activities function the traffic is under control without any major tie ups, that your safety is assured, and crowds out of control do not ruin your entertainment.

Neil Allan Mackenzie  
A.S.F.C. President

P.S. The major reason this was not included in the first article, was that I did not give proper time to the Sentinel reporter who was interviewing me and tried to conduct two other matters of business at the same time. The Sentinel reporter was right to expect me to set aside time for press coverage in order to do the job properly.

## \$250 reward

\$250 reward for "Reggie" a golden retriever lost on Sept. 29 in the vicinity of Los Altos Hills around Foothill College. "Reggie" is a one-year-old male, approximately 80 pounds, with a dark golden to reddish even colored coat.

Reggie will possibly be found wearing a choke chain with I.D. tags and license attached, accompanied with a white flea collar. If located or sighted please call: 941-4618 (home) or 941-8700 (office)

## On the Spot...

By TOM SELBACH and MICHAEL KEARNS

What do you think of Foothill?



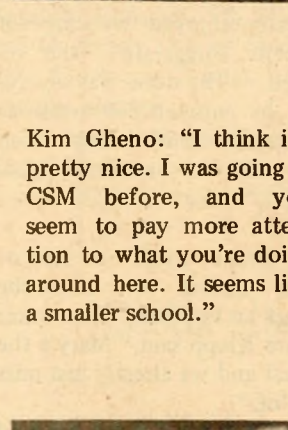
Steve Forsen:  
"This is my fourth year here. I think it's a good school, and I know of several people who come here from out of state because it is such a good school."



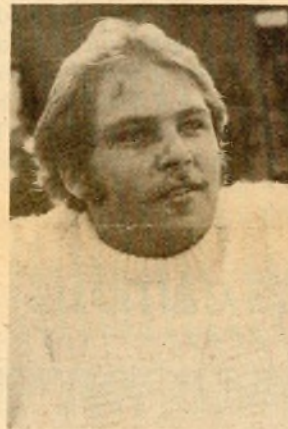
Elena Gordon:  
"It's great, I'm having a lot of fun. I came up here with no expectations, so I'm having a lot of fun. The teachers are pretty good."



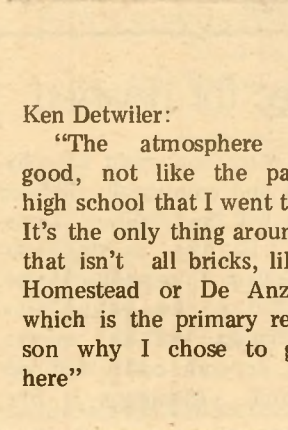
Byron Fry: "As far as the music department goes, I'd have to rate it top in the state. As far as JC's go, it seems to surpass all other schools in the state."



Kim Gheno: "I think it's pretty nice. I was going to CSM before, and you seem to pay more attention to what you're doing around here. It seems like a smaller school."



Mike Jacobsen: "Probably an 8 out of 10. Hugh Hefner rated it number one in girls out of West Coast JC's. The scholastic program is also excellent."



Ken Detwiler:  
"The atmosphere is good, not like the past high school that I went to. It's the only thing around that isn't all bricks, like Homestead or De Anza, which is the primary reason why I chose to go here"

## LOST ENCOUNTERS

Kevin Jones

FROM THE DEPTHS OF DEEPEST HYPER SPACE COMES A SPACECRAFT



INSIDE LURKS AN INTELLEAGENT COOL INTELLECT, ITS INSECTLIKE EYES TURNED TO A SMALL GREEN PLANET



THE BEING SETS ITS LANDING GEAR, THE DESTINATION---



EARTH!





# Four Coast artists paint on paper

By Vicky Nuttall

Walk into the Hubert H. Semans Library at Foothill anytime from now until October 26, and you will see a highly diversified group art show on display. Entitled "Painting on Paper", the show consists of pieces done entirely on that medium by four West Coast artists: Suzan Anson, Barney O'Brien, Bill Quinn, and Angelita Stover.

Suzan Anson, a graduate of California State University at Long Beach, is now a major illustrator whose index of clients includes A & M Records, Max Factor, Psychology Today, and Billboard Magazine. Though known for her editorial, advertising, and technical illustration as well as her textbook, filmstrip, and trade show art, in this exhibit she has concentrated on an abstract "anatomical vocabulary."

Barney O'Brien graduated

from the University of Michigan and has taught both there and at the New School of Visual Concepts in Seattle. An advocate of the "minimal school of art", his work is geometric and highly organized. O'Brien has had several group and one man shows in California, Washington and Michigan.

Bill Quinn, a former teacher at the University of Southern California and a graduate of San Jose State, was the featured artist in the 1977 San Jose State University Annual Juried Show. He regards painting on paper as an inexpensive medium that frees one from inhibitions, allowing the artist to take risks without the fear of destroying an expensive project.

Angelita Stover creates pieces revolving around ritual. A graduate of Oregon State University, she says her work takes on the aspects of ritual from the mak-

ing of the paper to the choosing of objects associated with ritual such as the fans and cloaks included in this exhibit. She has had her work displayed at num-

erous shows including the First Annual Northwest Artists' Workshop Celebration of Women Artists.

The exhibit will be open

free of charge to the public Monday - Thursday from 8 a.m. to 11 p.m., Fridays from 8 a.m. to 4:30 p.m., and Saturdays from 10 a.m. to 2 p.m.



Untitled work by artist Suzan Anson will be one of many paintings on paper exhibited at Foothill College's Hubert H. Semans Library from Oct. 3 - 26. According to Ms. Anson, in this work "space is multi-layered and intertwined with form."

# Ask a question about money. We'll give you a full report.

If you have a financial question you'd like answered, Bank of America is the place to come.

In fact, we can probably give you a full report on the subject. That's because our Consumer Information Reports cover a wide variety of banking subjects. Including, "A Guide to Checks and Checking," "How to Establish Credit," "Ways to Finance an Education," "Rights and Responsibilities: Age 18," and more. They're free at our branches.

Of course, we offer a wide variety of other banking services you might find useful. Like College Plan® Checking. And if you qualify, Student BankAmericard® Visa® and Instant Cash overdraft protection.

You see, we figure the more you know about banking, the more likely you are to bank with the bank that can do you the most good. Quite a few Californians think that's us. And we're hoping you'll come to the same conclusion.

**Depend on us. More California college students do.**

BANK OF AMERICA 





# 30 yard field goal with 30 seconds left in game lifts Owls to first conference victory Bosman's big boot beats Laney 13-12



Photo by Jim Lanahan  
Fullback Jim Whitechurch, 31, finds daylight.

By Michael Lemke

Kris Bosman kicked a 30-yard field goal with 30 seconds left in the game to lift Foothill to its first Golden Gate Conference victory of the year against two defeats.

After viewing game films, Coach Jim Fairchild said "actually we were pretty lucky, they had a lot of dropped passes and missed scoring opportunities."

October 13, Foothill hosts West Valley on the Foothill gridiron, with Owls hoping to even it's GGC record at 2-2 and season record at 3-3.

Dan Jaqua, the second signal caller used by the Owls, led Foothill to the winning field goal moments after Laney's Jeff Perry had kicked a 22 yard field goal to give Laney the lead at 12-10 with 1:47 remaining in

the game. The drive began on the Foothill 17 yard line.

Bosman's winning field goal was his second of the night finishing with 7 points on two field goals and an extra point.

Defensively, the Owls put constant pressure on the Laney quarterback, only to have the pass defense break down and yield 227 yards passing.

Defensive tackle Mike Perko "played an outstanding game," according to Fairchild. To offset the Foothill rush being put on by Perko and rest of the defensive line, Laney used screen passes and draw plays which proved quite effective.

"We had quite a few breakdowns with our pass defense, which we'll work on this week and hopefully get things straightened out," adds Fairchild.

"We haven't dominated a game running yet but it has been enough of a threat to help our passing attack," says Fairchild. Leading the Owl rushing attack against West Valley will be fullback Jim Whitechurch and halfback Jeff Melenudo, along with Jaqua in the backfield.

Having been unable to pass the ball to the wide receivers, the Owls have worked on it in practice, and hope to improve the passing game against West Valley

Friday, September 29, DeAnza defeated Foothill 22-7 to give Foothill it's second straight defeat against league opponents.

Mike Morze who stated the De Anza game at quarterback injured his knee and it doubtful, "because his knee isn't responding to treatment" says Fairchild.

## Intramurals

Every sport from basketball and badminton to arm wrestling and frisbee tossing is available for student participation through the Physical Education Departments Intramural Program.

"We'll have a tournament for any sport which has enough student interest," says Gene Hawley, Director of Foothill's Intramural Program.

The Intramural Program interacts with coeducational recreation every Wednesday night having the gym, pool and weight room facilities open from 7-9:30 p.m., according to Hawley.

The next scheduled Intramural event will be the annual Turkey Trot, which will be held November 21, to Hawley.

The next scheduled Intramural event will be the annual Turkey Trot, which will be held November 21.

"Prizes will be given in mens, womens and faculty divisions," says Hawley, "with the winners receiving turkeys, and the second and third place runners being award chickens."

According to Hawley, one half of a college credit can be earned by students who participate in all intramurals of the quarter.



Photo by Jim Lanahan  
Owl linebacker Phil Manoukian, 58, tackles De Anza ball carrier.

## KEPLER'S

Have You Discovered the Secrets of the Village Corner?

One of them is KEPLER'S BOOKS & MAGAZINES: the Bay Area's most complete paperback bookstore.

Drive into the Village Corner Shopping Center this week. Kepler's is situated in the cool Inner Court near a crystal fountain. Here you will find books on every subject of concern to humankind.

Visit regularly at:

### Kepler's Books & Magazines

Village Corner (in the inner court)  
El Camino & San Antonio - Los Altos

Free Parking

Open 7 days & eves

## OWL MEN HARRIERS LOSE RACE

Foothill opened it's GGC cross country season by losing 24-32 against Diablo Valley College on October 5. Foothill previously finished 13 out of 14 teams at the Crystal Springs Invitational, held last weekend.

October 12 the Owls run against conference foes SJCC and De Anza at Crystal Springs.

Coach Hank Ketels says "We have a real strong opportunity to beat both of those teams."

Jake White is Foothill's number one harrier, followed by Rich Stiller, Phil McCarty, Kevin O'Halloran, James Boit, and Earl Harris. White finished third in the DVC meet running a strong 21 minute 58 second clocking

over the four mile course, adds Ketels.

"The most impressive thing about our runners is that they continue to improve at a tremendous rate. Dale Bryan, who should be one of our top three runners, is returning after a leg injury and and sould help our squad," says Ketels.

### Womens volleyball

Foothill's womens volleyball team got off to a fast start last week with their first conference win over Chabot College. This coupled with their loss to West Valley, Friday, Oct. 6, puts their conference record at 1-1.

Foothill's overall record now stands at 3-1, after their first two preseason wins.

The volleyball team plays SF City College Oct. 11 and De Anza Oct. 13, both games are at Foothill.

DISCOVER

## ON THE COVER

Modeling School/Glamour Photography

An active models agency with specialized instruction in all phases of modeling for women and men / Day & evening appointments / Day & evening classes

GRAND OPENING · OCTOBER 12 / 13 / 14  
FREE PHOTO SESSION & GIFT CERTIFICATE DRAWING

50 TOWN AND COUNTRY VILLAGE  
STEVENS CREEK BOULEVARD, SAN JOSE, CA

408-984-0877







# TURNTABLES

- Ultra low wow and flutter provides precise speed.
- New base construction eliminates feedback.
- New tone arm system reduces distortion.



PL 518

**\$1477<sup>4</sup>**

Auto-return, direct-drive turntable features accurate DC servo motor, quick start operation, wow and flutter: 0.03% (WRMS), s/n ratio: 73dB (Din B). Superb tonal quality and anti-howl characteristics. Comes in metal-like vinyl cabinet. 949159EUX14774 ..... \$195.00



PL 512

**\$797<sup>4</sup>**

Manual belt-drive turntable with 4-pole synchronous motor, outstanding value. 958840EUX7974 ..... \$100.00



PL 514

**\$989<sup>6</sup>**

Auto-return, belt-drive turntable, wow and flutter: 0.055% (WRMS), 4-pole synchronous motor, static balanced S-shaped pipe arm. 952206EUX9896 ..... \$125.00



PL 516

**\$1236<sup>2</sup>**

Auto-return, belt-drive turntable with precision FG servo DC motor, wow and flutter: 0.045% (WRMS). Static balanced S-shaped pipe arm. 952214EUX12362 ..... \$150.00



PL 540

**\$1697<sup>2</sup>**

Auto-return, direct-drive turntable with exacting quartz PLL DC motor, wow and flutter: 0.025% (WRMS), s/n Ratio: 73 dB (Din B). 958859EUX16972 ..... \$235.00



PL 560

**\$2189<sup>3</sup>**

Fully automatic, direct-drive turntable with quartz PLL DC motor, wow and flutter: 0.025% (WRMS), s/n Ratio: 73dB (Din B), pitch meter. 958867EUX21893 ..... \$295.00



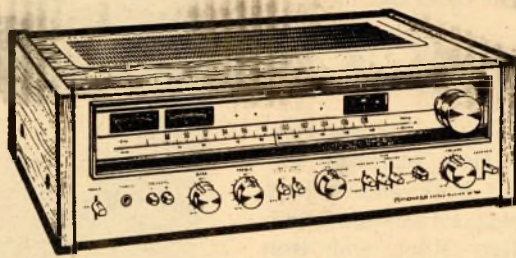
PL 630

**\$2988<sup>7</sup>**

Fully automatic, direct-drive turntable with quartz PPL DC motor, s/n ratio: 75dB, (Din B), wow and flutter: L.E.D. function indicators. 959073EUX29887 ..... \$400.00

# RECEIVERS

- New large left and right channel power meters.
- New circuitry for greater reliability and performance.
- Increased wattage and lower distortion.



SX 780

**\$2488<sup>6</sup>**

FM/AM/FM stereo receiver. DC power amplification and superb FM/Phono EQ at a practical price. Features 45 watts per channel, RMS at 8 ohms, 20-20,000 Hz, with no more than 0.05% total harmonic distortion, FM muting, tape monitor, tuning meter, FM s/n ratio: 80dB (Mono), 72dB (Stereo). 959022EUX24886 ..... \$350.00



SX 450

**\$1347<sup>4</sup>**

15 watts per channel, RMS at 8 ohms, 20-20,000 Hz, 0.5% total harmonic distortion. Excellent value. 932884EUX13474 ..... \$175.00



SX 580

**\$1694<sup>7</sup>**

20 watts per channel, RMS at 8 ohms, 0.3% total harmonic distortion, 20-20,000 Hz. Power meters. 959006EUX16947 ..... \$225.00



SX 680

**\$1989<sup>4</sup>**

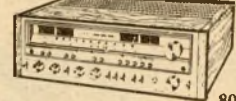
30 watts per channel, RMS at 8 ohms, 0.1% total harmonic distortion, 20-20,000 Hz. Power meters. 959014EUX19894 ..... \$275.00



SX 880

**\$3288<sup>7</sup>**

60 watts per channel, RMS at 8 ohms, 20-20,000 Hz, 0.05% total harmonic distortion. DC power, power meters. 959030EUX32887 ..... \$450.00



SX 980

**\$4287<sup>4</sup>**

80 watts per channel, RMS at 8 ohms, 20-20,000 Hz, 0.05% total harmonic distortion. DC power, power meters. 946524EUX42874 ..... \$600.00



SX 1280

**\$6788<sup>6</sup>**

185 watts per channel, RMS at 8 ohms, 20-20,000 Hz., 0.03% THD. Independent dual power supplies, DC power, power meters. 946532EUX67886 ..... \$900.00

# PIONEER

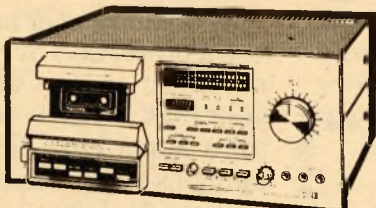
## New for 1979

### At Low BEST Prices



# TAPE DECKS

- New head designs for added durability and frequency response.
- Easy front load access convenience
- Superior signal to noise ratios



CTF 900

**\$3689<sup>4</sup>**

3-head "microprocessor" cassette deck provides exceptionally accurate professional two-meter performance with DC servo control and Dolby<sup>®</sup> noise reduction. Features hard sendust heads, fluorescent peak level indication with peak hold function, electronic tape counter and leather touch switch control. Automatic memory stop play / wind / end repeat. Outstanding features and value. 959065EUX36894 ..... \$500.00



CTF 500

**\$1349<sup>3</sup>**

DC servo motor, wow/flutter, 0.05% (WRMS), s/n ratio: 64dB (Dolby<sup>®</sup>) frequency response: 30-16,000 Hz, auto shut-off. 959049EUX13493 ..... \$175.00



CTF 4242

**\$1698<sup>7</sup>**

Electronically-controlled DC motor, wow/flutter: 0.08% (WRMS), s/n ratio: 62dB (Dolby<sup>®</sup>) 30-16,000 Hz. 942529EUX16987 ..... \$225.00



CTF 6262

**\$2194<sup>7</sup>**

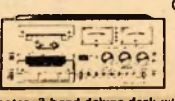
Front access with electronically controlled DC motor, wow/flutter: 0.08% (WRMS), s/n ratio: 62dB (Dolby<sup>®</sup>), 30-16,000 Hz. 942537EUX21947 ..... \$300.00



CTF 700

**\$278<sup>6</sup>**

3-meter deck includes a dynamic level meter, DC motor, wow/flutter: 0.05% (WRMS), s/n ratio: 64dB (Dolby<sup>®</sup>), 25-17,000 Hz. 959057EUX27876 ..... \$375.00



CTF 1000

**\$4496<sup>3</sup>**

2-motor, 3-head deluxe deck with wow/flutter: 0.05% (WRMS), s/n ratio: 64dB (Dolby<sup>®</sup>), 20-19,000 Hz. 942545EUX44963 ..... \$600.00



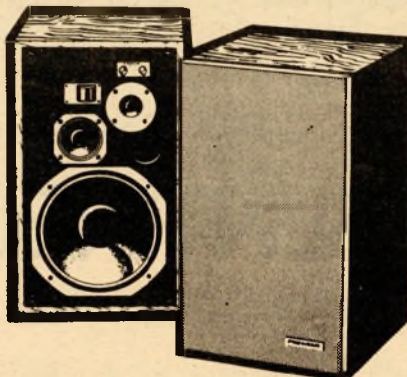
RT 707

**\$4688<sup>4</sup>**

Reel tape deck with 3-motor servo AC direct-drive, 2 speeds, 4 heads, 2-step bias, auto-reverse playback. 942596EUX46884 ..... \$625.00

# SPEAKERS

- Excellent wattage handling capability
- Full, clean bass response without distortion
- Clear, airy, brilliant treble response



HPM 100

**\$1994<sup>4</sup>**  
Each

4-way, 4-driver speaker system can be used with receivers or amplifiers rated up to 200 watts per channel at 8 ohms. Frequency response: 30-25,000 Hz. Features a 12" woofer, 4" midrange, 1 1/4" tweeter and super tweeter, walnut veneered cabinet, 26 3/8" high. 932361EUX19944 ..... Each \$350.00



Project 80

**\$1196<sup>4</sup>**  
Pair

2-way speaker with 8" cone woofer, 1 7/8" cone tweeter, handles up to 20 watts, 35-20,000 Hz, 18 1/2" high. 958875EUX11964 ..... Pair \$198.00



Project 120

**\$947<sup>6</sup>**  
Each

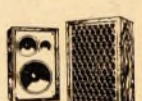
3-way speaker with 10" cone woofer, 5" cone midrange, 1 7/8" cone tweeter, handles up to 60 watts, 30-20,000 Hz, 23" high. 958883EUX9476 ..... Each \$145.00



HPM 40

**\$1994<sup>4</sup>**  
Pair

3-way speaker handles up to 40 watts per channel at 8 ohms, with 10" woofer, 1 1/4" tweeter and super tweeter. 22 1/2" high. 932329EUX19944 ..... Pair \$350.00



CS66G

**\$1098<sup>3</sup>**  
Each

3-way speaker with 10" woofer, 6 1/2" midrange and 3" cone tweeter, handles up to 40 watts per channel at 8 ohms. 21 5/8" high. 933139EUX10983 ..... Each \$170.00



HPM 60

**\$1688<sup>7</sup>**  
Each

4-way speaker handles up to 60 watts per channel at 8 ohms, 10" woofer, 1 1/4" tweeter, 24" high. 932388EUX16887 ..... Each \$250.00



CS99A

**\$2188<sup>7</sup>**  
Each

5-way speaker features 15" woofer, 5" midrange, 4" midrange, tweeter and 1/2" super tweeter, handles up to 100 watts at 8 ohms. 24 3/4" high. 933198EUX21867 ..... Each \$375.00



HPM 150

**\$3988<sup>7</sup>**  
Each

4-way tower speaker handles up to 300 watts at 8 ohms, 15 1/2" woofer, 4" cone midrange, 1 1/4" cone tweeter, super tweeter, 38 3/5" high. 941753EUX39887 ..... Each \$500.00

# ACCESSORIES



TX5500II

**\$1094<sup>7</sup>**

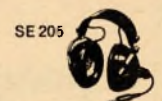
Tuner features PLL multiplex circuitry, muting, and a stereo indicator light, and tuning meter for easy station selection. 942472EUX10947 ..... \$150.00



SA5500II

**\$1094<sup>7</sup>**

Amplifier delivers 15 watts per channel at 8 ohms, 20-20,000 Hz, and no more than 0.5% total harmonic distortion. 942480EUX10947 ..... \$150.00



SE 205

**\$189<sup>6</sup>**

Headphones with rich bass response. Sealed speaker, 20-20,000 Hz. 932337EUX1896 ..... \$30.00



SE 405

**\$324<sup>7</sup>**

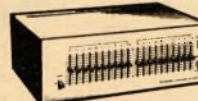
Headphones with volume level controls attached to both left and right channels, 20-20,000 Hz. 932396EUX3247 ..... \$50.00



SE 700

**\$643**

Headphones with high-polymer film driver, wide diaphragm, 20-20,000 Hz. 932328EUX6443 ..... \$90.00



SG9500

**\$2299<sup>3</sup>**

Graphic Equalizer controls your frequency response, 10 elements each for left and right channels. 584711EUX22993 ..... \$300.00



TVX9500

**\$1997<sup>2</sup>**

VHF/UHF TV audio tuner provides Hi-Fi sound on all TV channels, VHF tuning with LED channel indicators, UHF selector and fine tune control. 958999EUX19972 ..... \$250.00

**MANY MORE HIGH FIDELITY COMPONENTS IN THE SHOWROOM**

2535 California St. Mtn. View in San Antonio Shopping Center Across From the Old Mill

Hrs: Mon. thru Fri. 10 a.m.-9 p.m.; Sat. 10 a.m.-6 p.m.; Sun. 12 noon-5 p.m.