

KFJC, Area's Newest Radio Outlet, Starts Broadcasting Next Tuesday

Foothill College's new educational FM radio station plans to begin regular broadcasting on Oct. 13 at 8 p.m.

KFJC, in the making since November of last year, will broadcast on a frequency of 88.5 megacycles, four nights a week, from 8-10 p.m.

Program material will consist of good music, lecture series, jazz, radio drama and special service broadcasts.

The station has a power output of 30 watts and can be received within a 10 mile radius of the college, which is located at 150 El Camino Real in Mountain View.

The dream of several Foothill students will be realized when the station takes to the airways, especially Robert Ballou, son of Mr. and Mrs. Byron Ballou, 3945 El Cerrito road, Palo Alto.

Ballou has assumed the major responsibility of placing the station on the air. Last year he was appointed station manager by the Foothill College Board of Communications.

Ballou prepared and submitted to the college Board of Trustees an estimated budget of \$4,500. This budget was approved on Nov. 17, 1958, less than a year ago.

With the help of R. A. Isberg, a radio design consultant, Ballou engineered and submitted the application for a construction permit to the Federal Communications Commission. The permit was granted on Feb. 3 and construction was begun April 5 of this year.

Ballou and his staff were given a room in the basement of the main college building to convert to a control room.

The remodeling job consisted of sound damping the control room, installing a ventilation system and placing a large window between the control room and studio. The job was completed in late April and equipment was moved into the rooms.

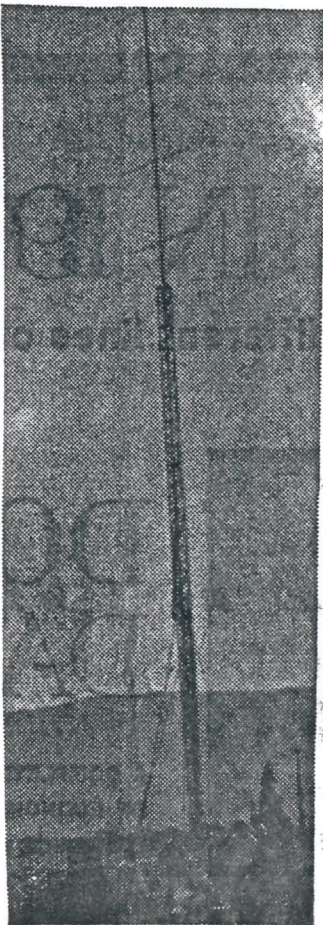
Meanwhile, Ballou and his father built a speaker cabinet and console desk in their garage workshop. This do-it-yourself project saved the school approximately \$400. Records were ordered and the technical equipment was mounted in the desk.

The station was then ready, except for the transmitting antenna. The metal was ordered at the end of the spring semester. The supplier, however, could not supply the material

until late in August.

The antenna was also built by Ballou, with the aid of a neighbor, Russel Rhoades, who did the necessary welding.

On Sept. 26 the antenna was lifted into position on the roof of the college building.



FOOTHILL ANTENNA —

Shown above is Foothill College's FM station antenna being raised to an upright position on the college's new educational radio station, which will begin regular broadcasting on Oct. 13 at 8 p.m. Viewing their work are Bob Ballou, student station manager; Bryon Ballou; Bud Seeley, maintenance man; and Foothill students Roger Murray, Nathan Ballard, and Jim Fernbaugh.

Ballou recently selected his managers staff for the fall semester. It consists of Ballou, Roy Ruth, program manager, and Roger Murray, traffic manager. Both Ruth and Murray are students in a radio production laboratory course offered at night at the college.

Auditions are being held for several additional announcers. Faculty and students of the college are eligible for audition.

PALO ALTO TIMES